

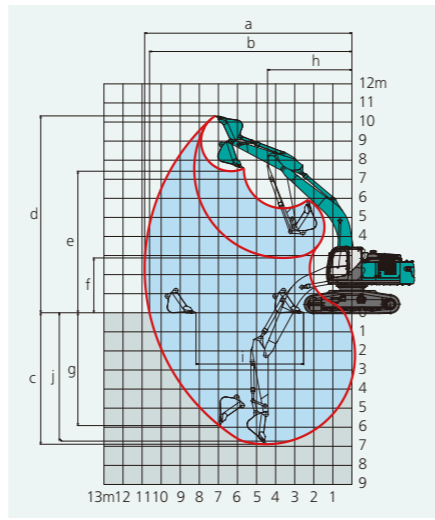
OPERATING WEIGHT & GROUND PRESSURE

| SK260LC High & Wide Spec. | | | SK300LC High & Wide Spec. | | | SK350LC High & Wide Spec. | | |
|---------------------------|-----------------|------------|---------------------------|-----------------|------------|---------------------------|-----------------|------------|
| Operating Weight | Ground Pressure | Shoe Width | Operating Weight | Ground Pressure | Shoe Width | Operating Weight | Ground Pressure | Shoe Width |
| kg | kPa | mm | kg | kPa | mm | kg | kPa | mm |
| 29,000 | 58 | 600 DG*1 | 34,200 | 64 | 600 DG*1 | 38,600 | 72 | 600 DG*1 |
| 28,600 | 57 | 600 TG*2 | 34,000 | 63 | 600 TG*2 | 38,300 | 71 | 600 TG*2 |
| 29,200 | 50 | 700 DG*1 | 34,100 | 55 | 700 DG*1 | 39,100 | 62 | 700 DG*1 |
| 28,900 | 49 | 700 TG*2 | 34,500 | 55 | 700 TG*2 | 38,700 | 62 | 700 TG*2 |

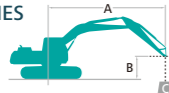
*1 DG: Double grouser shoe *2 TG: Triple grouser shoe

WORKING RANGES

| MODEL (High & Wide Specs) | SK260LC | SK300LC | SK350LC |
|--|-----------------|-----------------|-----------------|
| Boom | 6.02 m | 6.20 m | 6.50 m |
| Arm | Standard 2.98 m | Standard 3.10 m | Standard 3.30 m |
| a- Max. digging reach | 10.3 | 10.87 | 11.26 |
| b- Max. digging reach at ground level | 10.07 | 10.61 | 11.00 |
| c- Max. digging depth | 6.66 | 6.66 | 7.24 |
| d- Max. digging height | 10.13 | 10.32 | 10.90 |
| e- Max. dumping clearance | 7.22 | 7.42 | 7.68 |
| f- Min. dumping clearance | 2.89 | 2.87 | 2.94 |
| g- Max. vertical wall digging depth | 5.81 | 5.91 | 6.29 |
| h- Min. swing radius | 3.91 | 4.43 | 4.31 |
| i- Horizontal digging stroke at ground level | 5.31 | 5.64 | 5.87 |
| j- Digging depth for 2.4 m (8') flat bottom | 6.48 | 6.73 | 7.08 |
| Bucket capacity ISO heaped | 1.00 | 1.20 | 1.40 |



LIFTING CAPACITIES



A – Reach from swing centerline for arm top
 B – Arm top height above/below ground
 C – Lifting capacities in kilograms
 * Max. discharge pressure: 37.8 MPa

| SK260LC | | Standard Arm: 2.98 m Bucket: without Shoe: 600 mm Double grouser shoe (High & Wide Specs) | | | | | | | | | | HEAVY LIFT | | | |
|---------|----|---|---------|---------|---------|---------|---------|--------|--------|--------|--------|---------------|--------|--------|--|
| | | 1.5 m | | 3.0 m | | 4.5 m | | 6.0 m | | 7.5 m | | At Max. Reach | | Radius | |
| B | A | | | | | | | | | | | | | | |
| 7.5 m | kg | | | | | | | | | | | *4,860 | *4,860 | 6.98 m | |
| 6.0 m | kg | | | | | | | *5,970 | *5,970 | *5,920 | *5,920 | *4,650 | *4,650 | 7.91 m | |
| 4.5 m | kg | | | | | *8,210 | *8,210 | *6,870 | *6,870 | *6,260 | 5,860 | *4,660 | *4,660 | 8.48 m | |
| 3.0 m | kg | | | | | *10,690 | *10,690 | *8,040 | 7,860 | *6,840 | 5,660 | *4,830 | 4,480 | 8.75 m | |
| 1.5 m | kg | | | | | *12,660 | 11,350 | *9,140 | 7,500 | 7,370 | 5,470 | *5,190 | 4,390 | 8.76 m | |
| G. L. | kg | | | *7,190 | *7,190 | *13,570 | 11,040 | *9,870 | 7,270 | 7,230 | 5,350 | *5,810 | 4,510 | 8.50 m | |
| -1.5 m | kg | *8,710 | *8,710 | *13,020 | *13,020 | *13,580 | 10,990 | 9,940 | 7,190 | 7,200 | 5,310 | 6,640 | 4,930 | 7.95 m | |
| -3.0 m | kg | *14,430 | *14,430 | *18,010 | *18,010 | *12,740 | 11,130 | *9,530 | 7,270 | | | *7,750 | 5,870 | 7.05 m | |
| -4.5 m | kg | | | *14,700 | *14,700 | *10,570 | *10,570 | | | | | *8,110 | *8,110 | 5.61 m | |

| SK300LC | | Standard Arm: 3.1 m Bucket: without Shoe: 600 mm Double grouser shoe (High & Wide Specs) | | | | | | | | | | HEAVY LIFT | | | | |
|---------|----|--|--------|---------|---------|---------|---------|---------|--------|--------|--------|------------|--------|---------------|--------|--------|
| | | 1.5 m | | 3.0 m | | 4.5 m | | 6.0 m | | 7.5 m | | 9.0 m | | At Max. Reach | Radius | |
| B | A | | | | | | | | | | | | | | | |
| 9.0 m | kg | | | | | | | | | | | | | *4,660 | *4,660 | 6.38 m |
| 7.5 m | kg | | | | | | | | | *5,430 | *5,430 | | | *4,200 | *4,200 | 7.68 m |
| 6.0 m | kg | | | | | | | | | *6,390 | *6,390 | | | *4,030 | *4,030 | 8.53 m |
| 4.5 m | kg | | | | | *9,650 | *9,650 | *7,800 | *7,800 | *6,960 | *6,960 | *4,410 | *4,410 | *4,020 | *4,020 | 9.04 m |
| 3.0 m | kg | | | | | *12,830 | *12,830 | *9,310 | *9,310 | *7,750 | 6,930 | *6,600 | 5,280 | *4,150 | *4,150 | 9.27 m |
| 1.5 m | kg | | | | | *15,160 | 13,920 | *10,670 | 9,160 | *8,530 | 6,690 | *7,130 | 5,170 | *4,430 | *4,430 | 9.25 m |
| G. L. | kg | | | *7,100 | *7,100 | *16,130 | 13,610 | *11,560 | 8,900 | *9,100 | 6,530 | | | *4,910 | *4,910 | 8.98 m |
| -1.5 m | kg | *9,480 | *9,480 | *12,970 | *12,970 | *16,120 | 13,590 | *11,830 | 8,820 | 9,180 | 6,480 | | | *5,770 | 5,570 | 8.43 m |
| -3.0 m | kg | | | *20,040 | *20,040 | *15,220 | 13,750 | *11,350 | 8,900 | *8,210 | 6,600 | | | *7,430 | 6,560 | 7.53 m |
| -4.5 m | kg | | | *18,200 | *18,200 | *12,970 | *12,970 | *9,320 | 9,230 | | | | | *8,950 | 8,950 | 6.14 m |

| SK350LC | | Standard Arm: 3.3 m Bucket: without Shoe: 600 mm Double grouser shoe (High & Wide Specs) | | | | | | | | | | HEAVY LIFT | | | | |
|---------|----|--|---------|---------|---------|---------|---------|---------|---------|---------|--------|------------|-------|---------------|--------|--------|
| | | 1.5 m | | 3.0 m | | 4.5 m | | 6.0 m | | 7.5 m | | 9.0 m | | At Max. Reach | Radius | |
| B | A | | | | | | | | | | | | | | | |
| 9.0 m | kg | | | | | | | | | | | | | *6,210 | *6,210 | 6.90 m |
| 7.5 m | kg | | | | | | | | | *7,770 | *7,770 | | | *5,780 | *5,780 | 8.08 m |
| 6.0 m | kg | | | | | | | | | *8,020 | *8,020 | | | *5,630 | *5,630 | 8.86 m |
| 4.5 m | kg | | | | | *12,740 | *12,740 | *10,020 | *10,020 | *8,640 | *8,640 | *7,900 | 6,650 | *5,680 | *5,680 | 9.33 m |
| 3.0 m | kg | | | | | *15,680 | *15,680 | *11,460 | *11,460 | *9,390 | 8,490 | *8,220 | 6,480 | *5,900 | *5,900 | 9.54 m |
| 1.5 m | kg | | | | | *17,560 | 16,940 | *12,630 | 11,170 | *10,060 | 8,170 | *8,520 | 6,320 | *6,320 | 5,830 | 9.52 m |
| G. L. | kg | | | *9,920 | *9,920 | *18,030 | 16,540 | *13,220 | 10,830 | *10,430 | 7,960 | 8,530 | 6,220 | *7,030 | 6,000 | 9.24 m |
| -1.5 m | kg | *12,450 | *12,450 | *17,060 | *17,060 | *17,450 | 16,500 | *13,120 | 10,710 | *10,320 | 7,880 | | | *8,220 | 6,490 | 8.71 m |
| -3.0 m | kg | *19,090 | *19,090 | *21,480 | *21,480 | *15,900 | *15,900 | *12,160 | 10,800 | *9,320 | 7,980 | | | *8,630 | 7,540 | 7.85 m |
| -4.5 m | kg | | | *16,900 | *16,900 | *12,920 | *12,920 | *9,680 | *9,680 | | | | | *8,420 | *8,420 | 6.54 m |

- Notes:**
- Do not attempt to lift or hold any load that is greater than these lifting capacities at their specified lift point radius and heights. Weight of all accessories must be deducted from the above lifting capacities.
 - Lifting capacities are based on machine standing on level, firm, and uniform ground. User must make allowance for job conditions such as soft or uneven ground, out of level conditions, side loads, sudden stopping of loads, hazardous conditions, experience of personnel, etc.
 - Arm top defined as lift point.
 - The above lifting capacities are in compliance with ISO 10567. They do not exceed 87% of hydraulic lifting capacity or 75% of tipping load. Lifting capacities marked with an asterisk (*) are limited by hydraulic capacity rather than tipping load.
 - Operator should be fully acquainted with the Operator's and Maintenance Instructions before operating this machine. Rules for safe operation of equipment should be adhered to at all times.
 - Lifting capacities apply to only machine as originally manufactured and normally equipped by KOBELCO CONSTRUCTION MACHINERY CO., LTD.

Note: This catalog may contain attachments and optional equipment that are not available in your area. And it may contain photographs of machines with specifications that differ from those of machines sold in your areas. Please consult your nearest KOBELCO distributor for those items you require. Due to our policy of continuous product improvements all designs and specifications are subject to change without advance notice. Copyright by KOBELCO CONSTRUCTION MACHINERY CO., LTD. No part of this catalog may be reproduced in any manner without notice.

KOBELCO CONSTRUCTION MACHINERY CO., LTD.

5-15, Kitashinagawa 5-chome, Shinagawa-ku, Tokyo 141-8626 JAPAN
 Tel: +81 (0) 3-5789-2146 Fax: +81 (0) 3-5789-2135
 www.kobelco-kenki.co.jp/english_index.html

Inquiries To:

SK260LC/SK300LC/SK350LC-10-High & Wide Spec.-ANZ-101-170501IF

KOBELCO

SK260LC
SK300LC
SK350LC

High & Wide Specifications



We Save You Fuel
 Achieving a Low-Carbon Society

Power Meets Efficiency



A new line-up specially equipped for forestry and hilly terrain work has been added to the SK excavator series famous for outstanding productivity and extremely low fuel consumption.

The High & Wide Specification series have the generous ground clearance needed to penetrate sites littered with stumps or rocks. The extra crawler width ensures excellent stability, contributing to uninterrupted working and greater lifting capacity. Durability is significantly improved with full track guides and larger upper rollers for the crawlers, to prevent de-tracking.

With double grouser shoes used for better grip, these machines are designed to work smoothly over the roughest ground.



Productivity

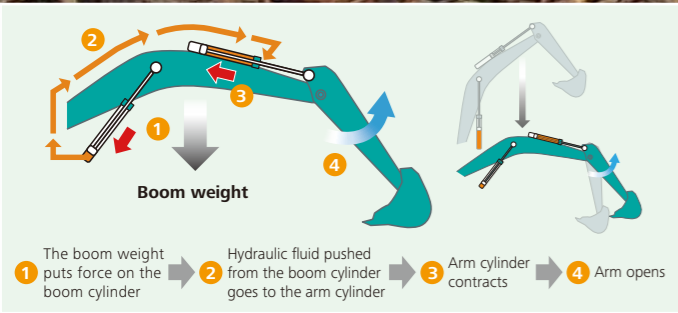
More Power and Higher Efficiency

The highly efficient hydraulic system minimizes fuel consumption while maximizing power. With nimble movement and outstanding digging power, these excavators improve job productivity.

Hydraulic System: Revolutionary Technology Saves Fuel

Arm Interflow System

When lowering the boom, this system uses the downward force generated by the boom's weight to push fluid to the arm. This greatly reduces the need to apply power from outside the system.



Performance

Excellent Stability

Overall width of crawlers is greater than standard models, for dependable stability and improved lifting capacity.

Overall width of crawler: **3,450 mm (SK260LC)**
3,650 mm (SK300LC/SK350LC)



Generous ground clearance

Travel is unhampered on forestry sites and in hilly terrain strewn with stumps and rocks.

Ground clearance: **780 mm (SK260LC)**
785 mm (SK300LC/SK350LC)



Durability



SPECIFICATIONS

| MODEL (High & Wide Specs) | SK260LC | SK300LC | SK350LC |
|---|----------|----------|----------|
| PERFORMANCE | | | |
| Bucket Capacity (ISO heaped) m ³ | 1.00 | 1.20 | 1.40 |
| Swing Speed min ⁻¹ | 10.8 | 10.3 | 10.0 |
| Travel Speed (high/low) km/h | 5.8/3.6 | 5.2/3.1 | 5.8/3.6 |
| Gradeability % (degree) | 70 (35) | 70 (35) | 70 (35) |
| Bucket Digging Force kN | 170/187* | 188/208* | 222/244* |
| Arm Crowding Force kN | 122/134* | 126/139* | 163/180* |
| Drawbar Pulling Force kN | 230 | 260 | 330 |

| ENGINE | | | |
|--|--|--|------------------------|
| Model | HINO J05ETB-KSSF | HINO J08ETM-KSDQ | HINO J08ETM-KSDL |
| Type | Direct injection, water-cooled, 4-cycle, 4-cylinder diesel engine with intercooler turbo-charger | Direct injection, water-cooled, 4-cycle, 6-cylinder diesel engine with intercooler turbo-charger | |
| Power Output (ISO 9249) kW/min ⁻¹ (ISO 14396) kW/min ⁻¹ | 132/2,100 137/2,100 | 173/2,100 185/2,100 | 197/2,100 209/2,100 |
| Max.Torque (ISO 9249) N-m/min ⁻¹ (ISO 14396) N-m/min ⁻¹ | 639/1,600 654/1,600 | 966/1,600 998/1,600 | 969/1,600 998/1,600 |
| Displacement L | 5.123 | 7.684 | 7.684 |
| Fuel Tank L | 403 | 503 | 503 |

| HYDRAULIC SYSTEM | | | |
|---|---|-----------------|-----------------|
| Pump | Two variable displacement pumps + One gear pump | | |
| Max. Discharge Flow L/min | 245 x 2, 21 x 1 | 245 x 2, 21 x 1 | 294 x 2, 21 x 1 |
| Relief Valve Setting (main)/(Power Boost) MPa | 34.3/(37.8) | 34.3/(37.8) | 34.3/(37.8) |
| Swing Motor | Axial piston motor | | |
| Travel Motors | 2 x axial-piston, two-step motors | | |
| Hydraulic Oil Tank (system) L | 165 (273) | 245 (410) | 245 (410) |

*Power Boost engaged

DIMENSIONS

| MODEL (High & Wide Specs) | SK260LC | SK300LC | SK350LC |
|--|---------|---------|---------|
| Arm length | 2.98 m | 3.10 m | 3.30 m |
| A Overall length | 10,090 | 10,620 | 11,170 |
| B Overall height (to top of boom) | 3,310 | 3,450 | 3,460 |
| C Overall width | 3,450 | 3,650 | 3,650 |
| D Overall height (to top of cab) | 3,380 | 3,480 | 3,480 |
| E Ground clearance of rear end* | 1,430 | 1,510 | 1,510 |
| F Ground clearance* | 780 | 785 | 785 |
| G Tail swing radius | 3,100 | 3,300 | 3,600 |
| G' Distance from center of swing to rear end | 3,070 | 3,270 | 3,600 |
| H Tumbler distance | 3,790 | 4,050 | 4,050 |
| I Overall length of crawler | 4,660 | 5,010 | 5,010 |
| J Track gauge | 2,850 | 2,950 | 2,950 |
| K Shoe Width | 600 | 600 | 600 |
| L Overall width of upperstructure | 2,980 | 2,980 | 2,980 |

* Without including height of shoe lug

